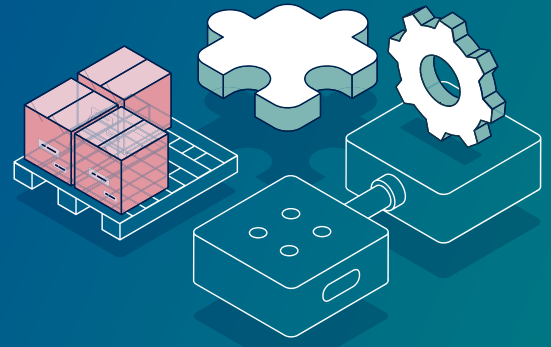


nShift Transsmart

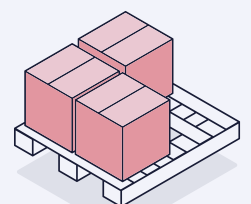
Functionality list



Core Functionalities

FUNCTIONALITY	SHORT DESCRIPTION OF FEATURES	Essential	Professional	Premium
Customer support	Support via phone, e-mail, and help center. Please see separate documentation for the response times and opening hours.	08:45 – 17:00 (CET)	08:45 – 23:00 (CET)	Premium 24x7
Online dashboard	Access to our online dashboard, to find, create and manage your shipments	✓	✓	✓
Configure settings and services	Configure various account settings in the dashboard, e.g. user rights, packages, booking profiles etc	✓	✓	✓
Shipment booking	Generate and book shipments with over 230+ carriers.	✓	✓	✓
Manifest	Automate the manifesting process	✓	✓	✓
Label printing	Print or receive labels in multiple sizes and formats like ZPL, PDF or base64	✓	✓	✓
Return label in the box	Return label in the box	✓	✓	✓
Pick-up and drop off-points	Ship to pick-up locations or from drop-off locations.	✓	✓	✓
Address book	Address book for faster creation of manual shipments.	✓	✓	✓
API Integration	Integrate via API, or with plugins from our partners	✓	✓	✓

...Next page: Advanced functionalities



Advanced Functionalities

FUNCTIONALITIES	SHORT DESCRIPTION OF FEATURES	Essential	Professional	Premium
Configured delivery options	Retrieve the configured delivery options via our API	✓	✓	✓
Brand your shipping experience	Brand your shipments with logo, sender addresses etc, to support the best customer journey	✓	✓	✓
Mass upload	Mass upload shipments via our dashboard. Prepare them to process one by one or immediately print all shipments after upload	✓	✓	✓
Batch printing of labels	Print labels in batches by quickly selecting them in your inbox.	✓	✓	✓
Dashboard customization	Create screens, limit fields, or functionality	✓	✓	✓
Use templates for fast shipping	Reduce filling all the data every time with our booking profiles and pre-filled addresses	✓	✓	✓
Return form for your website	Create an embedded return form on your website using our returns service	✓	✓	✓
Warehouse scan and ship*	SmartScan: Additional option within the dashboard, to process shipments quickly and efficiently with a barcode scanner	✓	✓	✓
Print&Ship® label*	Save paper & prevent the use of plastics by using the Print&Ship® label	✓	✓	✓
Extended label*	Custom label with specific information for your industry or customer	✓	✓	✓
Custom 2nd label*	Custom label with specific information for your industry or customer	✓	✓	✓
Find, create and manage your shipments	Find, create and manage your shipments in our online dashboard	✓	✓	✓
Direct links	Use deep links to integrate the Transsmart Dashboard functionalities with your application.	✓	✓	✓
Change log	Change log with revert function in case of wrong or accidental change	✓	✓	✓
Single Sign On (SSO)	Single Sign On with Microsoft, Okta or Google	✓	✓	✓
Subaccounts	Create a hierarchy with separate environments for divisions, brands, or customers	✗	✓	✓
Theming	Theme the online interface to match your company's identity	✗	✓	✓
Routing rules	Automated selection of carrier and carrier products based on pre-defined rules	✗	✓	✓
Pick Up Drop Off points	Retrieve Pick Up Drop Off points of all your carriers in a single call	✗	✓	✓
Customs documents	Generate customs documents or trade paperless.	✗	✓	✓
Carrier select	Manual or automatic selection of the cheapest or fastest delivery option	✗	✓	✓
Predict transport cost	"Make your month closing easier by getting to see all expected transport costs at a glance"	✗	✓	✓
Customer cost analysis	Upon booking the calculated rate is forwarded to your system. Use this for customer cost analysis	✗	✓	✓

FUNCTIONALITIES	SHORT DESCRIPTION OF FEATURES	Essential	Professional	Premium
Dangerous goods	Comply with regulations and provide the correct information to the carrier in case of dangerous goods.	✗	✗	✓
Shipment consolidation	Consolidate shipments to the same recipient to reduce delivery costs	✗	✗	✓
Custom pick-up and drop-off points	Add your stores as pick-up and drop-off points	✗	✗	✓
Insurance	Option to purchase extended parcel insurance	!	!	!

Printing functionalities

Fast print	Print the shipping label for your booked shipment immediately.	✓	✓	✓
Print software	Support for Windows, Windows server (Mac and Linux available at request).	✓	✓	✓
PDF or RAW	PDF or RAW printing (ZPL). Printers installed on pc / server.	✓	✓	✓
Print to user or printer	Print documents to the configured printers per user or direct to a specific printer	✓	✓	✓
Use your print software	Receive your documents and print them via the printing solutions of your application	✓	✓	✓
Print on package level	Print on package level for warehouse labeling machines	✓	✓	✓

Reporting functionalities

API reporting	Use our API to retrieve shipment data in your applications like BI tools or E-COM/ERP/WMS/TMS etc.	✓	✓	✓
Basic reporting	An overview of your transport flows with our basic excel reports.	✓	✓	✓
Advanced reporting	More extensive excel reporting, including shipments per period, carrier, delays, performance, historical status information, and cost predictions.	✗	✓	✓
Scheduled reporting	Schedule reports to receive them via e-mail or FTP, SFTP, FTPS	✗	✓	✓

Track & Trace functionalities

Carrier status events **	Receive status updates for your shipments by calling our API or let us push them directly to you when they are available.	✓	✓	✓
Harmonised Transsmart status events	Receive carrier statuses in our 52 harmonised status model	✓	✓	✓
Notification e-mails	Automatically send personalized e-mail notifications to your customers in your corporate identity.	✓	✓	✓
Spam Prevention	Maximize email deliverability with authentication methods SPF and DKIM	✓	✓	✓
Tracking page in your corporate identity*	TrackBox: no separate pages per carrier anymore. Create a Track & Trace page in your corporate identity with a link to your website or webshop.	✗	✓	✓
Proof of Delivery	Receive Proof of Delivery (POD) data, such as a signature or photo into your system.	✗	✗	✓

* This function has an additional recurring cost. Please see the pricelist for the details. ** Except for Royal Mail. This carrier requires a surcharge for status updates.

All functionalities depend on the integration level and the carrier's possibilities and support.

In case of any questions, please consult your account manager.