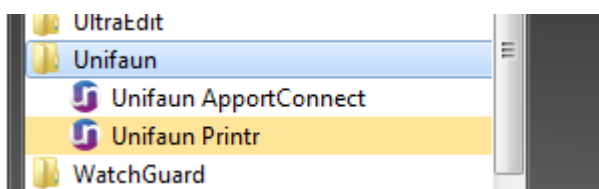
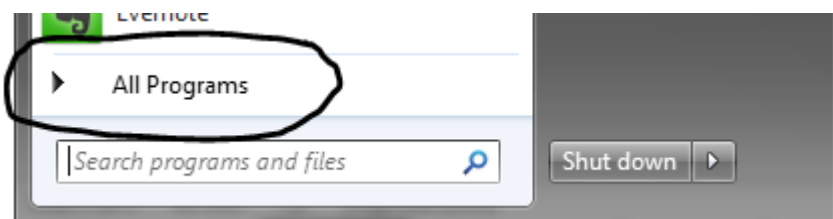


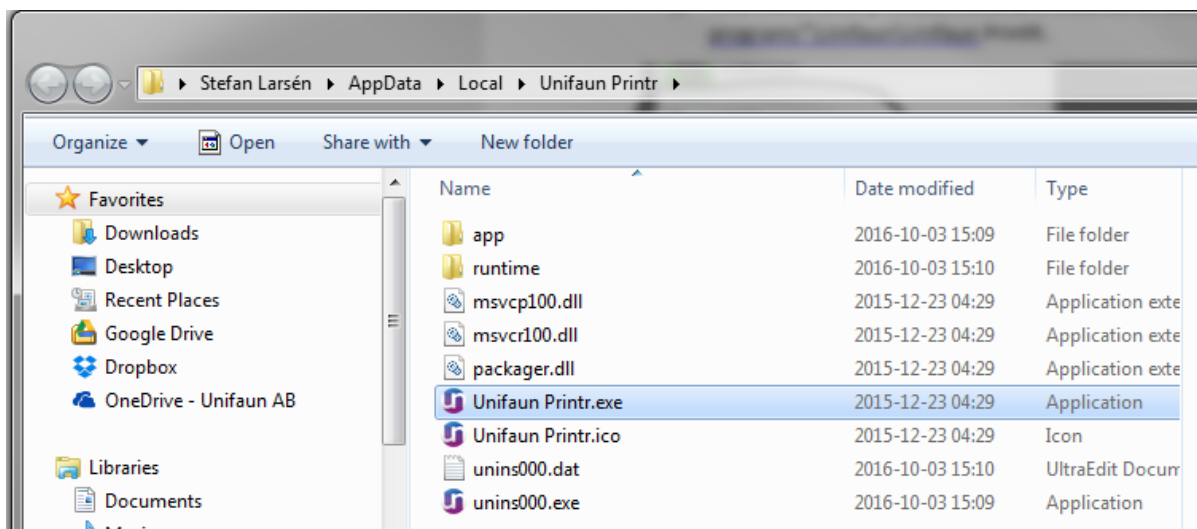
Migrate from PrintR to ApportConnect (Windows version)

This simple guide provides a step-by-step instruction for how to migrate from Unifaun “PrintR” (all versions) to the new version “Unifaun ApportConnect” when using the Windows version.

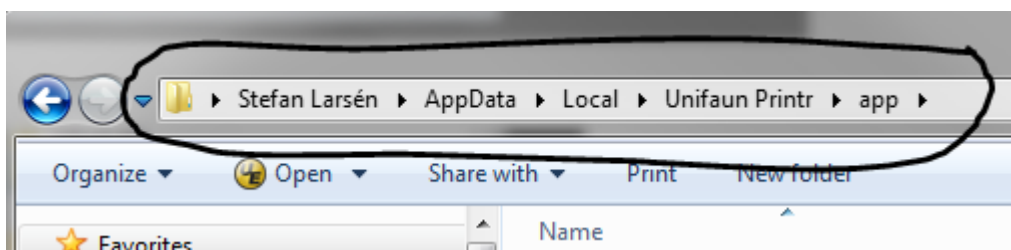
1. Install the new Unifaun ApportConnect version, according to the steps in the Unifaun ApportConnect User manual.
2. Find the directory where the old PrintR version is installed. Locate the shortcut from “All programs”\Unifaun\Unifaun PrintR.



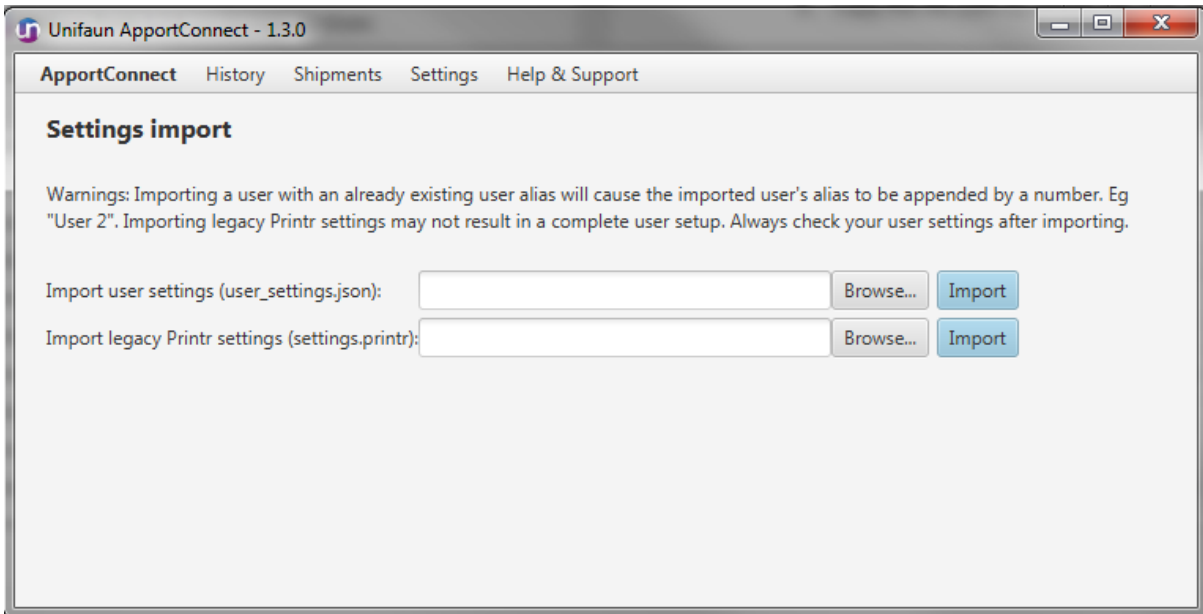
3. Right-Click the “Unifaun PrintR” application option and choose “Open file location”, the File explorer is opened in a new window.



4. Double click on the "app" folder.
5. Copy the file path in Explorer by selecting the path and then right click to choose Copy

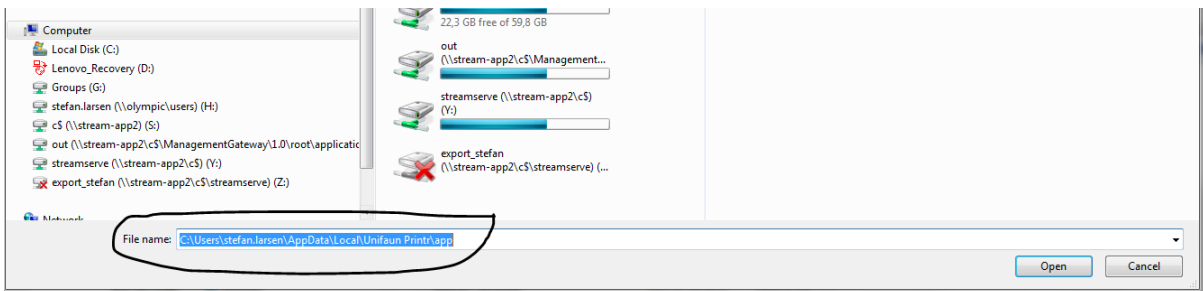


6. Open Unifaun ApportConnect ("All programs"\Unifaun\Unifaun ApportConnect)
7. Choose "Help & Support" from the menu and then "Import settings"



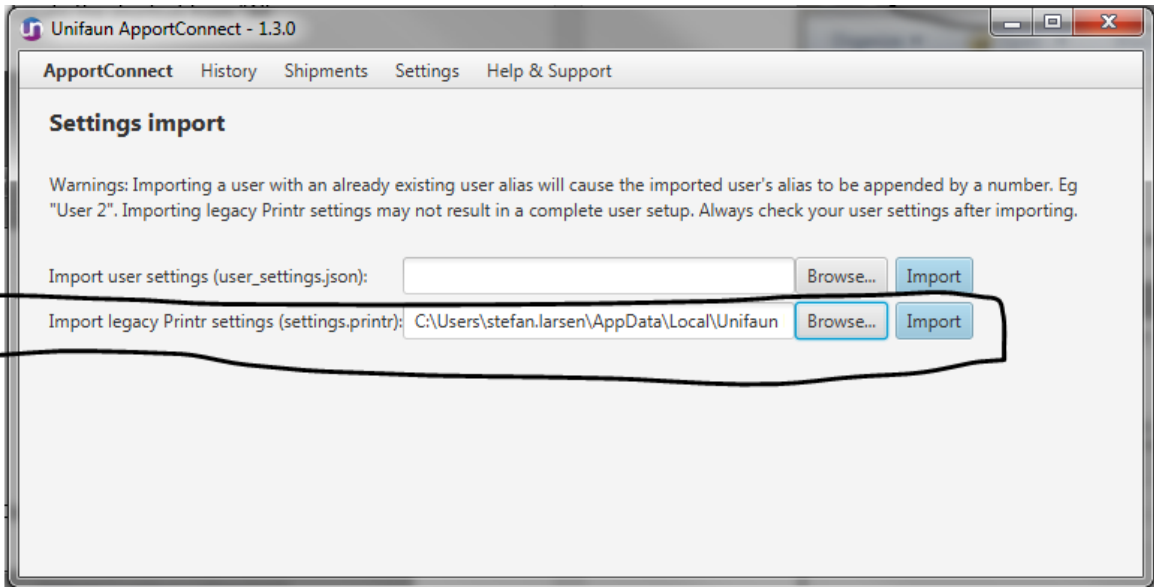
8. Click on the Browse button for the “Import legacy Printr settings”.

9. Paste in the path to the PrintR\app directory that you copied in step 5.



10. Click on the “Open” button.

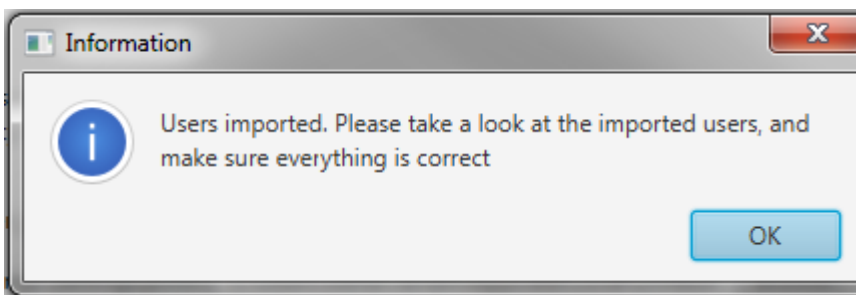
11. In the new Explorer window that opens, select the “settings.printr” file and click on "Open". The path to the old settings file will now be displayed in the "Import legacy Printr settings (settings.printr)" field.



12. Click on the “Import” button

13. Confirm “Import of legacy user settings” when prompted

14. Press Ok when the “Users imported” prompt is displayed.



15. Verify that the settings in Unifaun ApportConnect looks OK and verify that the integration and print functionality works well.

16. Deinstall the old PrintR software – follow the instructions in the Unifaun ApportConnect User manual if needed.

If you have any questions, please contact the Unifaun Customer support team.